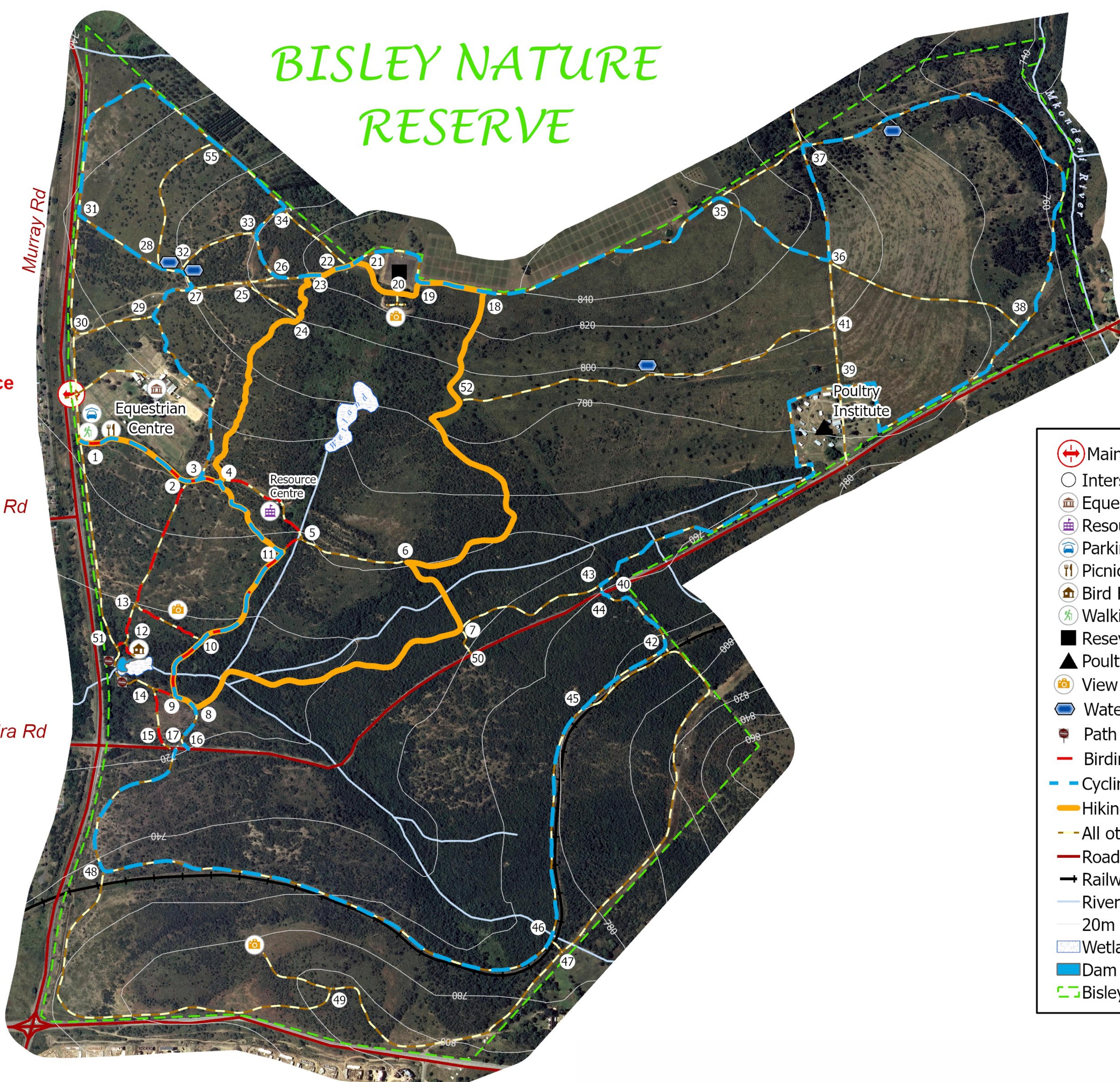




Oribi Airport

BISLEY NATURE RESERVE



- Main Entrance
- Intersection Numbers
- Equestrian Centre
- Resource Centre
- Parking
- Picnic and Braai Site
- Bird Hide
- Walking Trail Start
- Reservoir
- Poultry Institute
- View Point
- Water Trough
- Path Closed
- Birding (2.4km)
- Cycling (12km)
- Hiking (5 Km)
- All other paths
- Road
- Railway Line
- Rivers and streams
- 20m Contours
- Wetland
- Dam
- Bisley Nature Reserve Boundary

Matthew Rudling

Some of the members of Midlands Hiking Club were present in the reserve to witness the euthanization of a young female giraffe. From a distance, its a heart warming feeling to know that someone cares and goes the extra length to conserve and protect the wellbeing of Bisley and its animals, to all those who spared a bead of sweat to assist and gave up their own time to make this possible - well done. The young female had stepped into a snare and after countless attempts by the volunteer vet was unable to get close enough to dart and treat the wound, as a result the swolled foot had turned septic and infection set in, the tuff call had to eventually be made and so finally took place on Saturday morning during our walk through Bisley Nature Reserve.

Report by: Andrew Loots



Dave Sclanders



Dave Sclanders



Hettie Randall



Dave Sclanders



Dave Sclanders